

**Addiction and Prevention Services  
State Quality Committee**

This report is based upon the diagnosis submitted the most for paid claims. The report only shows the top ten diagnoses.

**Final**

**AGGREGATE ANALYSIS REPORT**

**Reporting Period**

**FROM:** April 1, 2008 **TO:** June 30, 2008

**Unit/Team/Department:**

PIHP Quality Improvement

**Topic/Project:**

Over and Under Utilization

**Lower Levels of Care Diagnosis (VO #13, Grid Row #11)**

**Monitoring Standard:**

42 CFR 438.240 (a and b) Quality Assessment and Performance Improvement Program

Utilization Management policies and procedures:

42 CFR 438.210 (b-e) Coverage and authorization of services

42 CFR 438.242 Health Information System

**Goal:**

The PIHP will track and report quarterly to SRS/AAPS utilization of lower levels of care by diagnosis.

**Objectives:**

To assure the PIHP is capturing the data

To evaluate for trends that may require system intervention and education

To allow data to be presented consistently for Committee evaluation and response

**Data Collection Activities:**

Data was collected from the ValueOptions CareConnect (claims) system. Utilization report including Intensive Outpatient, Outpatient and Other services reported together. The report details include the diagnosis description to include 'abuse' or 'dependency' along with the total # of units and percent of total unit. The report will include a pie graph showing a visual representation of the diagnosis distribution. This report will be provided as an aggregate, as well as by SRS region. Diagnoses will be broken out to the 5th digit of detail.

**Results: See next page**

## Addiction and Prevention Services State Quality Committee

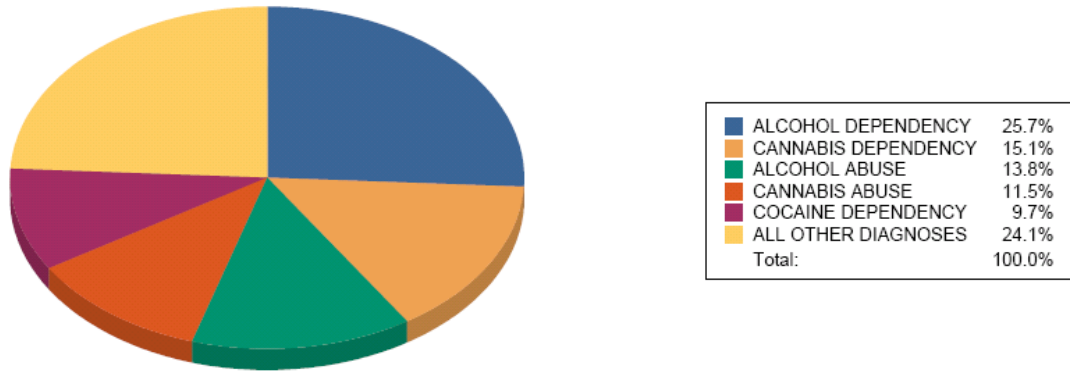
### All Regions both Funding Sources (Adult):

#### Outpatient and Lower Levels of Care Units by Diagnosis - Top 10

(units represent daily, hourly, and 15 minute increments)

Diagnosis	Units	% of Total
ALCOHOL DEPENDENCY	17,229	25.74%
CANNABIS DEPENDENCY	10,101	15.09%
ALCOHOL ABUSE	9,247	13.82%
CANNABIS ABUSE	7,698	11.50%
COCAINE DEPENDENCY	6,500	9.71%
AMPHETAMINES DEPENDENCY	6,112	9.13%
POLYSUBSTANCE DEPENDENCY	3,182	4.75%
OPIOIDS DEPENDENCY	1,533	2.29%
AMPHETAMINES ABUSE	1,238	1.85%
COCAINE ABUSE	1,189	1.78%
<b>Total</b>	<b>66,923</b>	<b>100.00%</b>

**Top Five Diagnosis Categories**



## Addiction and Prevention Services State Quality Committee

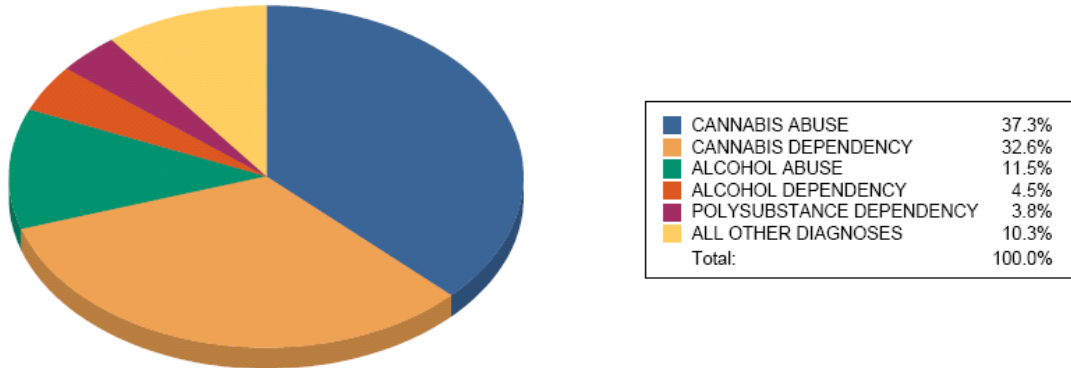
### All Regions both Funding Sources (Adolescent):

#### Outpatient and Lower Levels of Care Units by Diagnosis - Top 10

(units represent daily, hourly, and 15 minute increments)

Diagnosis	Units	% of Total
CANNABIS ABUSE	4,617	37.31%
CANNABIS DEPENDENCY	4,039	32.64%
ALCOHOL ABUSE	1,425	11.52%
ALCOHOL DEPENDENCY	552	4.46%
POLYSUBSTANCE DEPENDENCY	473	3.82%
AMPHETAMINES DEPENDENCY	352	2.84%
OTHER DEPENDENCY	182	1.47%
SUBSTANCE RELATED DISORDERS	152	1.23%
INHALANTS ABUSE	146	1.18%
OTHER ABUSE	146	1.18%
<b>Total</b>	<b>12,375</b>	<b>100.00%</b>

#### Top Five Diagnosis Categories



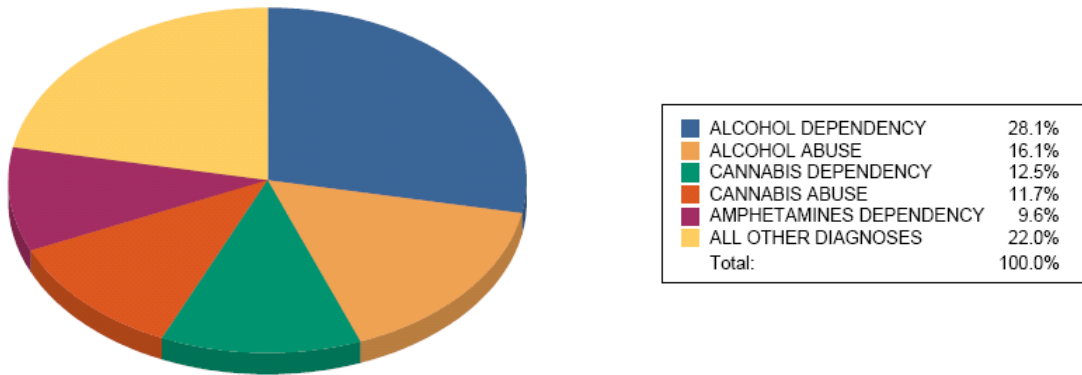
## Addiction and Prevention Services State Quality Committee

### All Regions Block Grant (Adult):

**Outpatient and Lower Levels of Care Units by Diagnosis - Top 10**  
(units represent daily, hourly, and 15 minute increments)

Diagnosis	Units	% of Total
ALCOHOL DEPENDENCY	14,320	28.12%
ALCOHOL ABUSE	8,219	16.14%
CANNABIS DEPENDENCY	6,358	12.48%
CANNABIS ABUSE	5,960	11.70%
AMPHETAMINES DEPENDENCY	4,870	9.56%
COCAINE DEPENDENCY	4,034	7.92%
POLYSUBSTANCE DEPENDENCY	2,545	5.00%
AMPHETAMINES ABUSE	1,004	1.97%
OPIOIDS DEPENDENCY	973	1.91%
COCAINE ABUSE	801	1.57%
<b>Total</b>	<b>50,933</b>	<b>100.00%</b>

**Top Five Diagnosis Categories**



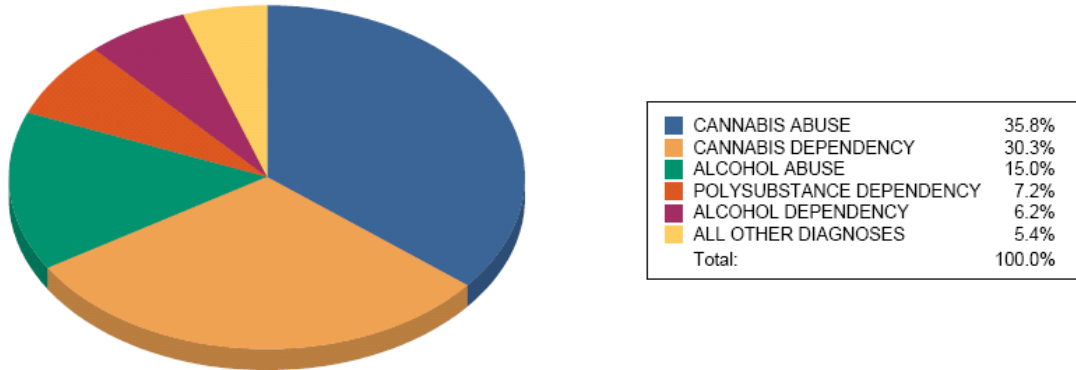
## Addiction and Prevention Services State Quality Committee

### All Regions Block Grant (Adolescent):

**Outpatient and Lower Levels of Care Units by Diagnosis - Top 10**  
(units represent daily, hourly, and 15 minute increments)

Diagnosis	Units	% of Total
CANNABIS ABUSE	558	35.79%
CANNABIS DEPENDENCY	473	30.34%
ALCOHOL ABUSE	234	15.01%
POLYSUBSTANCE DEPENDENCY	113	7.25%
ALCOHOL DEPENDENCY	97	6.22%
OTHER DEPENDENCY	41	2.63%
AMPHETAMINES DEPENDENCY	35	2.25%
HALLUCINOGENS DEPENDENCY	5	0.32%
COCAINE DEPENDENCY	2	0.13%
COCAINE ABUSE	1	0.06%
<b>Total</b>	<b>1,559</b>	<b>100.00%</b>

**Top Five Diagnosis Categories**



## Addiction and Prevention Services State Quality Committee

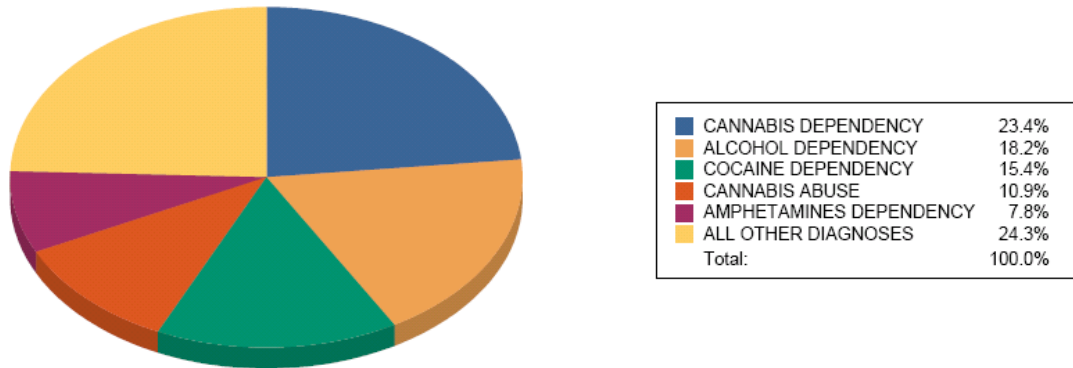
### All Regions Medicaid (Adult):

#### Outpatient and Lower Levels of Care Units by Diagnosis - Top 10

(units represent daily, hourly, and 15 minute increments)

Diagnosis	Units	% of Total
CANNABIS DEPENDENCY	3,743	23.41%
ALCOHOL DEPENDENCY	2,909	18.19%
COCAINE DEPENDENCY	2,466	15.42%
CANNABIS ABUSE	1,738	10.87%
AMPHETAMINES DEPENDENCY	1,242	7.77%
ALCOHOL ABUSE	1,028	6.43%
POLYSUBSTANCE DEPENDENCY	637	3.98%
OPIOIDS DEPENDENCY	560	3.50%
COCAINE ABUSE	388	2.43%
INHALANTS ABUSE	319	1.99%
<b>Total</b>	<b>15,990</b>	<b>100.00%</b>

#### Top Five Diagnosis Categories



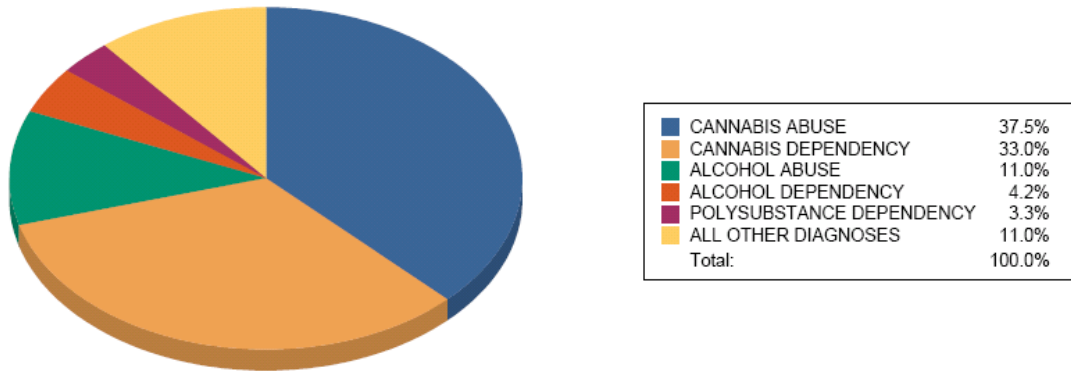
## Addiction and Prevention Services State Quality Committee

### All Regions Medicaid (Adolescent):

**Outpatient and Lower Levels of Care Units by Diagnosis - Top 10**  
(units represent daily, hourly, and 15 minute increments)

Diagnosis	Units	% of Total
CANNABIS ABUSE	4,059	37.53%
CANNABIS DEPENDENCY	3,566	32.97%
ALCOHOL ABUSE	1,191	11.01%
ALCOHOL DEPENDENCY	455	4.21%
POLYSUBSTANCE DEPENDENCY	360	3.33%
AMPHETAMINES DEPENDENCY	317	2.93%
SUBSTANCE RELATED DISORDERS	152	1.41%
INHALANTS ABUSE	146	1.35%
OTHER ABUSE	146	1.35%
PHENCYCLIDINE ABUSE	146	1.35%
<b>Total</b>	<b>10,816</b>	<b>100.00%</b>

**Top Five Diagnosis Categories**

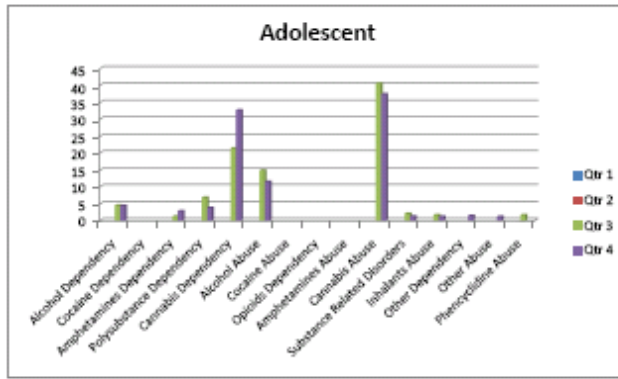
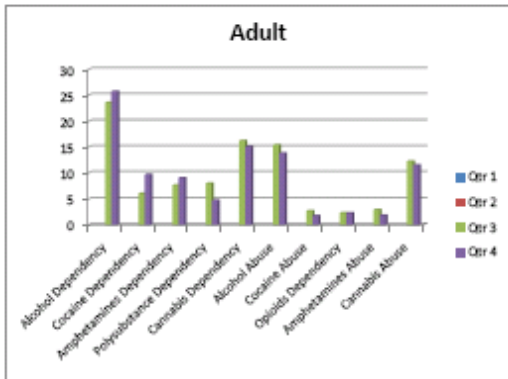


## Addiction and Prevention Services State Quality Committee

### Quarter Comparison (Adult and Adolescent):

Adult All Regions Quarter Comparison % of Total				
	Qtr 1	Qtr 2	Qtr 3	Qtr 4
Alcohol Dependency			23.60	25.74
Cocaine Dependency			6.12	9.71
Amphetamines Dependency			7.71	9.13
Polysubstance Dependency			8.06	4.73
Cannabis Dependency			16.23	15.09
Alcohol Abuse			15.42	13.82
Cocaine Abuse			2.72	1.78
Opioids Dependency			2.33	2.29
Amphetamines Abuse			2.93	1.85
Cannabis Abuse			12.26	11.50

Adolescent All Regions Quarter Comparison % of Total				
	Qtr 1	Qtr 2	Qtr 3	Qtr 4
Alcohol Dependency			4.54	4.46
Cocaine Dependency				
Amphetamines Dependency			1.22	2.84
Polysubstance Dependency			6.90	3.82
Cannabis Dependency			21.38	32.64
Alcohol Abuse			14.84	11.52
Cocaine Abuse				
Opioids Dependency				
Amphetamines Abuse				
Cannabis Abuse			40.55	37.31
Substance Related Disorders			2.10	1.23
Inhalants Abuse			1.66	1.18
Other Dependency				1.47
Other Abuse				1.18
Phencyclidine Abuse			1.66	



### Conclusions:

#### Fourth quarter for all regions and both funding sources

Adults: Alcohol and Cannabis dependency in that order are the two leading diagnosis.  
 Adolescents: Cannabis abuse and dependency in that order are the two leading diagnosis.

#### Fourth quarter for all regions Block Grant

Adults: Alcohol dependency and abuse in that order are the two leading diagnosis.  
 Adolescents: Cannabis abuse and dependency in that order are the two leading diagnosis.

#### Fourth quarter for all regions Medicaid

Adults: Cannabis and Alcohol dependency in that order are the two leading diagnosis.  
 Adolescents: Cannabis abuse and dependency in that order are the two leading diagnosis.

From fourth quarter data, it appears that alcohol dependency is one of the top two leading diagnosis for adults, regardless of funding stream. Alcohol dependency is also the leading

**Addiction and Prevention Services  
State Quality Committee**

diagnosis for the third quarter adult data for both funding streams. Cannabis dependency and alcohol abuse are also leading diagnosis for adults.

For adolescents in fourth quarter, Cannabis abuse and dependency in that order are the top two leading diagnosis regardless of funding stream.

A fiscal year comparison cannot be determined at this time due to the recent split in reporting of adult/adolescent data.

Other Dependency

ValueOptions has clarified the “other dependency” category. “Diagnosis codes 304.90 and 292.0 are reporting as “other dependency”. The actual diagnosis code description for these is as follows: 304.90 is “Unspecified Drug Dependency” and 292.0 is “Drug Withdrawal Syndrome”. The majority of claims that encounter these diagnoses come in as 304.90, which accounts for roughly 99% of the units reported in this diagnosis category.”

Substance Related Disorders

Please see below for more information from ValueOptions on the Substance Related Disorders category:

The Substance Related Disorders category resulted from diagnoses that were not rolled into appropriate categories in our reference table. This will be corrected for all future reports. In the meantime, here are the diagnoses that were included:

Diagnosis Code	VO Diagnosis Code Description
303.03	ACUTE ALCOHOLIC INTOXICATION IN ALCOHOLISM, IN REMISSION
292.12	DRUG-INDUCED HALLUCINOSIS
304.83	COMBINATIONS OF DRUG DEPENDENCE EXCLUDING OPIOID TYPE DRUG, IN REMISSION
305.03	ALCOHOL ABUSE, IN REMISSION
305.93	OTHER, MIXED, OR UNSPECIFIED DRUG ABUSE, IN REMISSION
291.89	ALCOHOL INDUCED DISORDERS
292.84	DRUG-INDUCED ORGANIC AFFECTIVE SYNDROME
304.11	BARBITURATE AND SIMILARLY ACTING SEDATIVE OR HYPNOTIC DEPENDENCE, CONTINUOUS USE
304.33	CANNABIS DEPENDENCE, IN REMISSION
292.81	DRUG-INDUCED DELIRIUM
304.71	COMBINATIONS OF OPIOID TYPE DRUG WITH ANY OTHER DRUG DEPENDENCE, CONTINUOUS USE
305.51	OPIOID ABUSE, CONTINUOUS USE
305.91	OTHER, MIXED, OR UNSPECIFIED DRUG ABUSE, CONTINUOUS USE

**Preliminary Recommendations to Committee:**

- It is recommended that the Committee continue to monitor trends.
- Other Abuse diagnosis still needs clarified with ValueOptions if “Other Abuse” diagnosis is included in the chart above.
- As recommended in the May SQC meeting, the Quarter Comparison tables and chart should be incorporated into future ValueOptions reports.
- It was also recommended in the last SQC meeting that ValueOptions provide in their annual reports, the top 3 drugs of choice for each region and overall. Based upon these drugs of choice, it was further recommended that ValueOptions develop or provide consumer tip sheets and any tip sheets that are developed by presented to the SQC for approval. Currently, ValueOptions is providing quarterly reports, but not annual. It is

**Addiction and Prevention Services  
State Quality Committee**

requested by the SQC that ValueOptions provide annual reports, in addition to the quarterly reports, next fiscal year and bring an ad hoc report to the SQC for FY2008.

- **It is also recommended by the Committee that this aggregate analysis and the ad hoc report presented by ValueOptions (split into Higher and Lower Levels of Care) be shared at the SRS Regional QI meeting and posted on the ValueOptions website for public access.**

**Date Presented to SQC:** 8/26/2008

**BY:** Kim Brown

**Recommendations from the Committee for action:** Recommendation and changes made by the SQC to the preliminary recommendations are noted above in **bold**.

**Person Responsible to follow-up and date due:** Kim Brown 11/6/08