

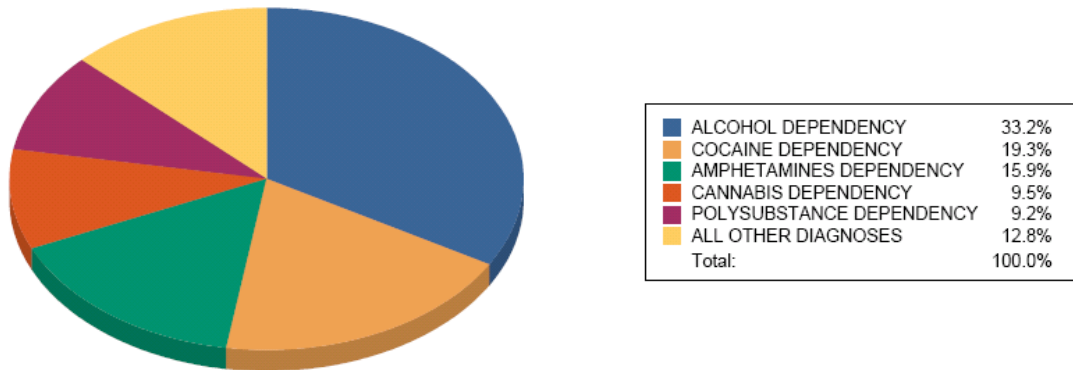
Addiction and Prevention Services State Quality Committee

All Regions both Funding Sources (Adult):

Hospital Detoxification and Higher Levels of Care Units by Diagnosis - Top 10

| Diagnosis | Units | % of Total |
|--------------------------|---------------|----------------|
| ALCOHOL DEPENDENCY | 8,123 | 33.21% |
| COCAINE DEPENDENCY | 4,709 | 19.25% |
| AMPHETAMINES DEPENDENCY | 3,893 | 15.92% |
| CANNABIS DEPENDENCY | 2,332 | 9.53% |
| POLYSUBSTANCE DEPENDENCY | 2,262 | 9.25% |
| OPIOIDS DEPENDENCY | 779 | 3.18% |
| ALCOHOL ABUSE | 693 | 2.83% |
| CANNABIS ABUSE | 566 | 2.31% |
| COCAINE ABUSE | 273 | 1.12% |
| AMPHETAMINES ABUSE | 247 | 1.01% |
| Total | 24,459 | 100.00% |

Top Five Diagnosis Categories



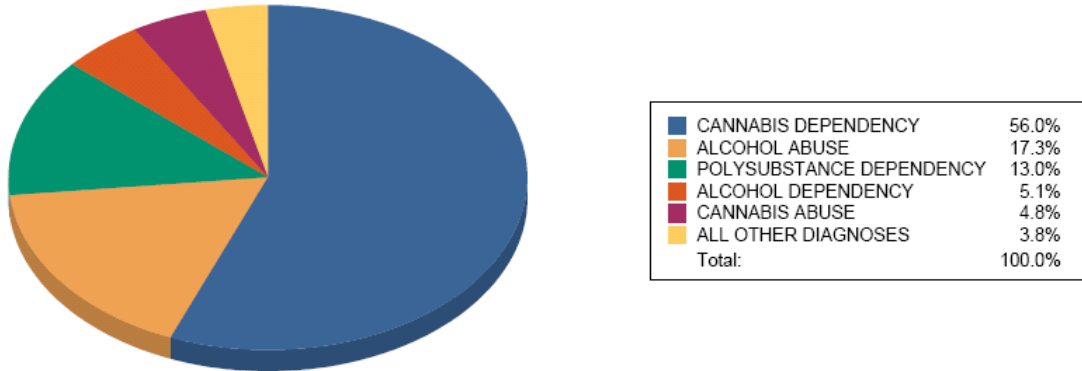
Addiction and Prevention Services State Quality Committee

All Regions both Funding Sources (Adolescent):

Hospital Detoxification and Higher Levels of Care Units by Diagnosis - Top 10

| Diagnosis | Units | % of Total |
|--------------------------|--------------|----------------|
| CANNABIS DEPENDENCY | 700 | 56.00% |
| ALCOHOL ABUSE | 216 | 17.28% |
| POLYSUBSTANCE DEPENDENCY | 163 | 13.04% |
| ALCOHOL DEPENDENCY | 64 | 5.12% |
| CANNABIS ABUSE | 60 | 4.80% |
| COCAINE DEPENDENCY | 47 | 3.76% |
| Total | 1,250 | 100.00% |

Top Five Diagnosis Categories



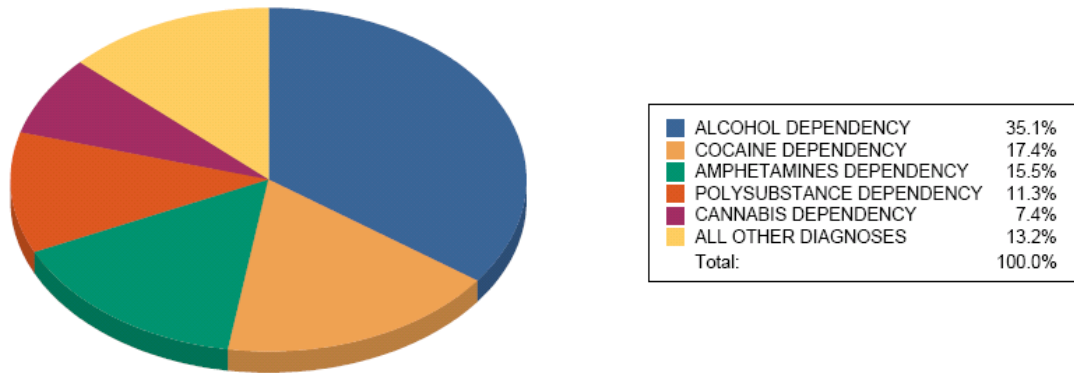
Addiction and Prevention Services State Quality Committee

All Regions Block Grant (Adult):

Hospital Detoxification and Higher Levels of Care Units by Diagnosis - Top 10

| Diagnosis | Units | % of Total |
|--------------------------|---------------|----------------|
| ALCOHOL DEPENDENCY | 6,593 | 35.08% |
| COCAINE DEPENDENCY | 3,272 | 17.41% |
| AMPHETAMINES DEPENDENCY | 2,919 | 15.53% |
| POLYSUBSTANCE DEPENDENCY | 2,130 | 11.33% |
| CANNABIS DEPENDENCY | 1,400 | 7.45% |
| ALCOHOL ABUSE | 635 | 3.38% |
| OPIOIDS DEPENDENCY | 613 | 3.26% |
| CANNABIS ABUSE | 453 | 2.41% |
| COCAINE ABUSE | 217 | 1.15% |
| AMPHETAMINES ABUSE | 173 | 0.92% |
| Total | 18,793 | 100.00% |

Top Five Diagnosis Categories



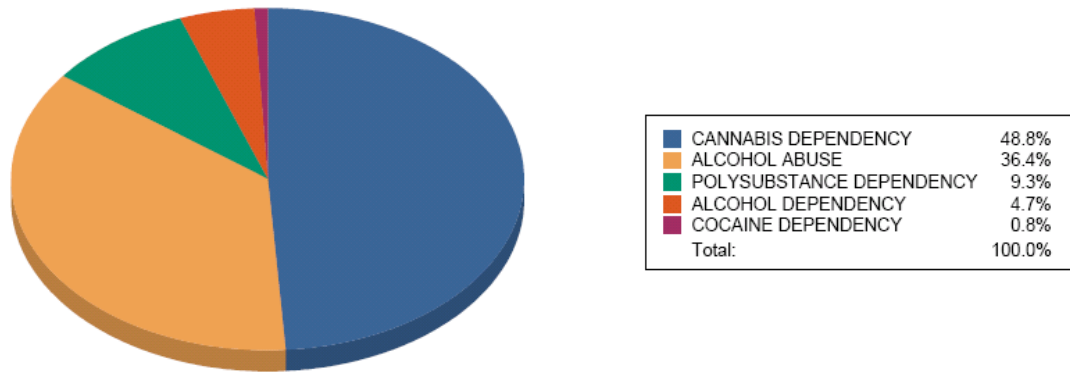
Addiction and Prevention Services State Quality Committee

All Regions Block Grant (Adolescent):

Hospital Detoxification and Higher Levels of Care Units by Diagnosis - Top 10

| Diagnosis | Units | % of Total |
|--------------------------|------------|----------------|
| CANNABIS DEPENDENCY | 290 | 48.82% |
| ALCOHOL ABUSE | 216 | 36.36% |
| POLYSUBSTANCE DEPENDENCY | 55 | 9.26% |
| ALCOHOL DEPENDENCY | 28 | 4.71% |
| COCAINE DEPENDENCY | 5 | 0.84% |
| Total | 594 | 100.00% |

Top Five Diagnosis Categories



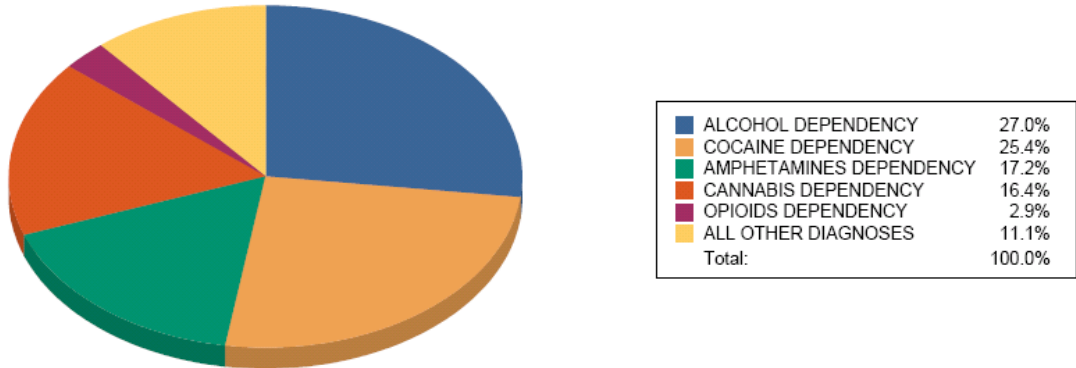
Addiction and Prevention Services State Quality Committee

All Regions Medicaid (Adult):

Hospital Detoxification and Higher Levels of Care Units by Diagnosis - Top 10

| Diagnosis | Units | % of Total |
|--------------------------|--------------|----------------|
| ALCOHOL DEPENDENCY | 1,530 | 27.00% |
| COCAINE DEPENDENCY | 1,437 | 25.36% |
| AMPHETAMINES DEPENDENCY | 974 | 17.19% |
| CANNABIS DEPENDENCY | 932 | 16.45% |
| OPIOIDS DEPENDENCY | 166 | 2.93% |
| POLYSUBSTANCE DEPENDENCY | 132 | 2.33% |
| CANNABIS ABUSE | 113 | 1.99% |
| AMPHETAMINES ABUSE | 74 | 1.31% |
| INHALANTS ABUSE | 62 | 1.09% |
| OTHER ABUSE | 62 | 1.09% |
| Total | 5,666 | 100.00% |

Top Five Diagnosis Categories



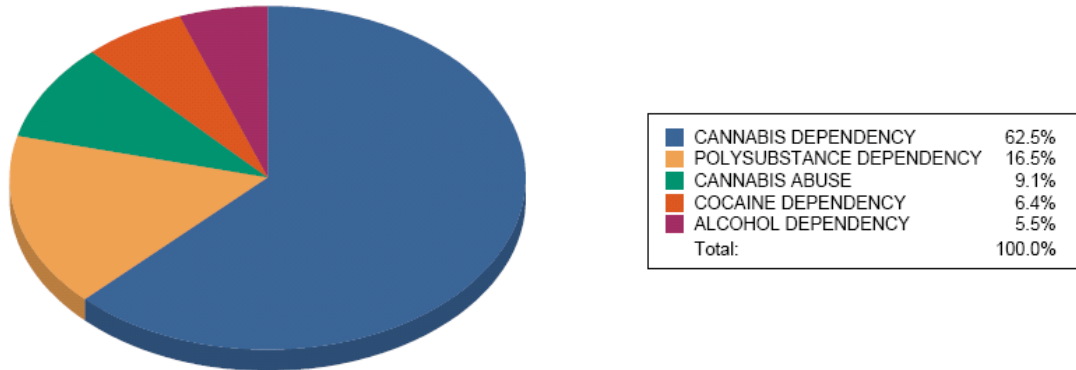
**Addiction and Prevention Services
State Quality Committee**

All Regions Medicaid (Adolescent):

Hospital Detoxification and Higher Levels of Care Units by Diagnosis - Top 10

| Diagnosis | Units | % of Total |
|--------------------------|------------|----------------|
| CANNABIS DEPENDENCY | 410 | 62.50% |
| POLYSUBSTANCE DEPENDENCY | 108 | 16.46% |
| CANNABIS ABUSE | 60 | 9.15% |
| COCAINE DEPENDENCY | 42 | 6.40% |
| ALCOHOL DEPENDENCY | 36 | 5.49% |
| Total | 656 | 100.00% |

Top Five Diagnosis Categories

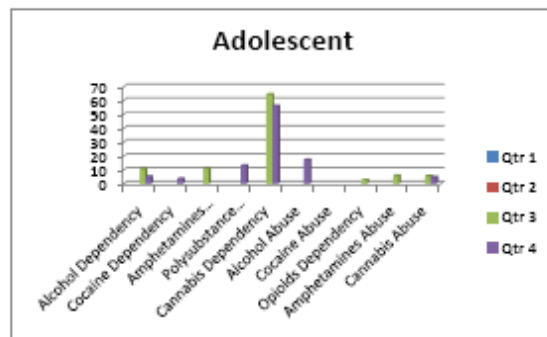
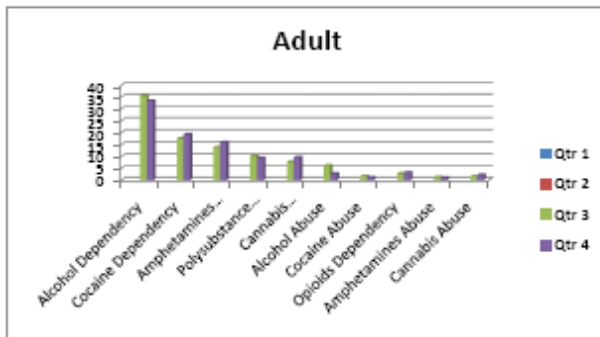


Addiction and Prevention Services State Quality Committee

Quarter Comparison (Adult and Adolescent):

| Adult All Regions Quarter Comparison % of Total | | | | |
|---|-------|-------|-------|-------|
| | Qtr 1 | Qtr 2 | Qtr 3 | Qtr 4 |
| Alcohol Dependency | | | 35.44 | 33.21 |
| Cocaine Dependency | | | 17.47 | 19.25 |
| Amphetamines Dependency | | | 13.75 | 15.92 |
| Polysubstance Dependency | | | 10.15 | 9.25 |
| Cannabis Dependency | | | 7.74 | 9.53 |
| Alcohol Abuse | | | 6.22 | 2.83 |
| Cocaine Abuse | | | 1.68 | 1.12 |
| Opioids Dependency | | | 2.87 | 3.18 |
| Amphetamines Abuse | | | 1.26 | 1.01 |
| Cannabis Abuse | | | 1.65 | 2.31 |

| Adolescent All Regions Quarter Comparison % of Total | | | | |
|--|-------|-------|-------|-------|
| | Qtr 1 | Qtr 2 | Qtr 3 | Qtr 4 |
| Alcohol Dependency | | | 10.60 | 5.12 |
| Cocaine Dependency | | | | 3.76 |
| Amphetamines Dependency | | | 10.80 | |
| Polysubstance Dependency | | | | 13.04 |
| Cannabis Dependency | | | 64.40 | 56.00 |
| Alcohol Abuse | | | | 17.28 |
| Cocaine Abuse | | | | |
| Opioids Dependency | | | 2.80 | |
| Amphetamines Abuse | | | 5.80 | |
| Cannabis Abuse | | | 5.60 | 4.80 |



Conclusions:

Fourth quarter for all regions and both funding sources

Adults: Alcohol and Cocaine dependency in that order are the two leading diagnosis.

Adolescents: Cannabis dependency and Alcohol abuse in that order are the two leading diagnosis.

Fourth quarter for all regions Block Grant

Adults: Alcohol and Cocaine dependency in that order are the two leading diagnosis.

Adolescents: Cannabis dependency and Alcohol abuse in that order are the two leading diagnosis.

Fourth quarter for all regions Medicaid

Adults: Alcohol and Cocaine dependency in that order are the two leading diagnosis.

Adolescents: Cannabis and Polysubstance dependency in that order are the two leading diagnosis.

From fourth quarter data, it appears that Alcohol and Cocaine dependency are the two leading diagnosis for adults, regardless of funding stream. This is consistent with the third quarter adult data for both funding streams.

**Addiction and Prevention Services
State Quality Committee**

For adolescents in fourth quarter, Cannabis dependency is the leading diagnosis. Alcohol abuse is the next leading diagnosis except for the Medicaid funding stream. For Medicaid, Polysubstance dependency is the next leading diagnosis.

A fiscal year comparison cannot be determined at this time due to the recent split in reporting of adult/adolescent data.

Other Dependency

ValueOptions has clarified the “other dependency” category. “Diagnosis codes 304.90 and 292.0 are reporting as “other dependency”. The actual diagnosis code description for these is as follows: 304.90 is “Unspecified Drug Dependency” and 292.0 is “Drug Withdrawal Syndrome”. The majority of claims that encounter these diagnoses come in as 304.90, which accounts for roughly 99% of the units reported in this diagnosis category.”

Substance Related Disorders

Please see below for more information from ValueOptions on the Substance Related Disorders category:

The Substance Related Disorders category resulted from diagnoses that were not rolled into appropriate categories in our reference table. This will be corrected for all future reports. In the meantime, here are the diagnoses that were included:

| Diagnosis Code | VO Diagnosis Code Description |
|----------------|--|
| 303.03 | ACUTE ALCOHOLIC INTOXICATION IN ALCOHOLISM, IN REMISSION |
| 292.12 | DRUG-INDUCED HALLUCINOSIS |
| 304.83 | COMBINATIONS OF DRUG DEPENDENCE EXCLUDING OPIOID TYPE DRUG, IN REMISSION |
| 305.03 | ALCOHOL ABUSE, IN REMISSION |
| 305.93 | OTHER, MIXED, OR UNSPECIFIED DRUG ABUSE, IN REMISSION |
| 291.89 | ALCOHOL INDUCED DISORDERS |
| 292.84 | DRUG-INDUCED ORGANIC AFFECTIVE SYNDROME |
| 304.11 | BARBITURATE AND SIMILARLY ACTING SEDATIVE OR HYPNOTIC DEPENDENCE, CONTINUOUS USE |
| 304.33 | CANNABIS DEPENDENCE, IN REMISSION |
| 292.81 | DRUG-INDUCED DELIRIUM |
| 304.71 | COMBINATIONS OF OPIOID TYPE DRUG WITH ANY OTHER DRUG DEPENDENCE, CONTINUOUS USE |
| 305.51 | OPIOID ABUSE, CONTINUOUS USE |
| 305.91 | OTHER, MIXED, OR UNSPECIFIED DRUG ABUSE, CONTINUOUS USE |

Preliminary Recommendations to Committee:

- It is recommended that the Committee continue to monitor trends.
- Other Abuse diagnosis still needs clarified with ValueOptions if “Other Abuse” diagnosis is included in the chart above.
- As recommended in the May SQC meeting for the Lower Levels of Care Diagnosis AA (VO #13), the Quarter Comparison tables and chart should be incorporated into future reports for the Higher Levels of Care.
- It was also recommended in the last SQC meeting for the Lower Levels of Care Diagnosis AA (VO #13) that ValueOptions provide in their annual reports, the top 3 drugs of choice for each region and overall. Based upon these drugs of choice, it was further recommended that ValueOptions develop or provide consumer tip sheets and any tip sheets that are developed by presented to the SQC for approval. Currently, ValueOptions is providing quarterly reports for both the Higher and Lower Levels of

**Addiction and Prevention Services
State Quality Committee**

Care by Diagnosis reports, not annual. It is requested by the SQC that ValueOptions provide annual reports for both, in addition to the quarterly reports, next fiscal year and bring an ad hoc report to the SQC for FY2008.

- **Community norms impact these numbers.**
- **Potential connection to CTC data.**
- **Potential future Performance Improvement Project.**
- **It is also recommended by the Committee that this aggregate analysis and the ad hoc report presented by ValueOptions (split into Higher and Lower Levels of Care) be shared at the SRS Regional QI meeting and posted on the ValueOptions website for public access.**

Date Presented to SQC: 8/26/2008

BY: Kim Brown

Recommendations from the Committee for action: Recommendation and changes made by the SQC to the preliminary recommendations are noted above in **bold**.

Person Responsible to follow-up and date due: Kim Brown 11/6/08