

**Addiction and Prevention Services
State Quality Committee**

The majority of claims that encounter these diagnoses come in as 304.90, which accounts for roughly 99% of the units reported in this diagnosis category.

Other Abuse

ValueOptions has clarified the "other abuse" category. The first code falling into this category is 305.10, tobacco use disorder, which ValueOptions paid for up until January 1, 2009. 305.80, antidepressant type abuse is also in this category. Codes 305.90, 305.91, 305.92 and 305.93 are included as "other mixed or unspecified drug abuse". The final code, V71.09 "other suspected mental condition" is used by providers as a billing code for assessments if the assessment does not show a substance use disorder. The code allows providers to be paid for the assessment but acknowledges that there is no need for treatment.

All Other Diagnoses

Only the top ten diagnoses for the overall Fiscal Year to Date are displayed in the report. Any other diagnosis encountered is included in the "All Other Diagnoses" category.

Results: See Attachment A

Conclusions:

Fiscal YTD by Region, All Funding Sources, All Ages Higher Levels of Care (Top 3)

Top 3 Diagnosis Fiscal YTD 2010 by SRS Region							
SRS Region	Alcohol Dependency	Cocaine Dependency	Cannabis Dependency	Amphetamines Dependency	Alcohol Abuse	Opioid Dependency	Polysubstance Dependency
Kansas							
City	First	Second	Third				
Northeast	First	Third		Second			
South							
Central	First		Third	Second			
Southeast	First		Third	Second			
West	First		Second				Third
Wichita	First	Second		Third			
Other	Second				First	Third	

*When a member shows up in the "Other" region category, the county/region could not be found.

FY2010 Annual Summary

*We do not have Fiscal YTD information for FY2009, therefore, annual trending cannot be determined for this Fiscal year. Trending by Fiscal YTD will be completed in the next aggregate analysis.

Adults:

- For Medicaid in FY2010, the top 3 leading diagnosis Fiscal YTD in order from highest to lowest is: Alcohol dependency (25.66%), Amphetamines dependency (17.81%), and Cocaine dependency (17.29%). It was interesting to note the

Addiction and Prevention Services State Quality Committee

increase in Amphetamines Dependency for fourth quarter, and the decrease in cocaine dependency for fourth quarter:

- Amphetamines dependency (Q1 - 16.95%, Q2 - 14.14%, Q3 - 16.59%, Q4 - 23.58%)
- Cocaine dependency (Q1 - 15.84%, Q2 - 19.29%, Q3 - 23.47%, Q4 - 10.84%)

For FY2009, Alcohol dependency was also the leading diagnosis. For FY2009, the second leading diagnosis was Cocaine dependency or Amphetamines dependency.

- For AAPS funded in FY2010, the top 3 leading diagnosis Fiscal YTD in order from highest to lowest is: Alcohol dependency (40.68%), Amphetamines dependency (14.61%), and Cocaine dependency (10.69%). For FY2009, Alcohol dependency was the leading diagnosis each quarter. The second leading diagnosis was Cocaine dependency or Amphetamine dependency.

Adolescents:

- For Medicaid in FY2010, the top 3 leading diagnosis Fiscal YTD in order from highest to lowest is: Cannabis dependency (70.71%), Amphetamines dependency (7.98%), and Alcohol dependency (7.27%). It was interesting to note the fluctuation in Amphetamines dependency, increase in alcohol dependency, and decrease in cannabis abuse.
 - Amphetamines dependency (Q1 - 2.49%, Q2 - 11.78%, Q3 - 5.42%, Q4 - 11.53%)
 - Alcohol dependency (Q1 - 4.14%, Q2 - 1.56%, Q3 - 8.74%, Q4 - 13.74%)
 - Cannabis abuse (Q1 - 13.49%, Q2 - 3.11%, Q3 - 3.10%, Q4 - 4.11%)

FY2009, Cannabis dependency was the leading diagnosis each quarter and the second leading diagnosis varied by quarter.

All Funding Sources, All Ages, Statewide:

- The top 3 leading diagnosis Fiscal YTD in order from highest to lowest is: Alcohol dependency (36.20%), Amphetamines dependency (14.94%), and Cannabis dependency (11.81%).

All Funding Sources, All Ages, Regional:

As the Regional table above illustrates, Alcohol dependency is the first highest diagnosis in each region except the "Other" region. The second leading diagnosis in 3 of 6 regions is Amphetamines dependency.

A recommendation from the State Quality Committee was that ValueOptions provide annual reports, in addition to the quarterly reports, for both the Higher and Lower Levels of Care by Diagnosis. These reports should be submitted annually with the charts showing a full year.

These annual reports and graphs are now completed.

As recommended in the May 2008 SQC meeting, the Quarter Comparison tables and chart should be incorporated into future ValueOptions reports. **These changes are completed.**

**Addiction and Prevention Services
State Quality Committee**

Other Conditions

The "Other Conditions that may be the focus of clinical attention" were diagnoses that were rolled into the Other Abuse and Other Dependency categories. This category should not show up on any further reports. **A review and electronic search of the raw reports was done for "Other Conditions" and this description was not found in the report.**

Preliminary Recommendations to Committee:

- It is recommended that the Committee continue to monitor trends.
- It is recommended that ValueOptions continue to provide annual reports showing a full fiscal year.
- It is recommended that trending by Fiscal YTD be completed in the next annual aggregate analysis.
- Based upon the change in prevalence of Amphetamines dependency shown in this aggregate, it is recommended that the Committee provide input on actions to address this. **VO to bring some of this data (top three substances of abuse and current trending) to April face-to-face provider meeting.**
- It is also recommended by the Committee that this aggregate analysis and the ad hoc report presented by ValueOptions be posted on the ValueOptions website for public access.

Date Presented to SQC: 2/10/2011

BY: Cissy McKinzie

Recommendations from the Committee for action: Committee approves of the Preliminary Recommendations as shown above. Enhancements made by the SQC to the Preliminary Recommendations are noted above in **bold**.

Person Responsible to follow-up and date due: Kim Brown 5/12/11

Addiction and Prevention Services State Quality Committee

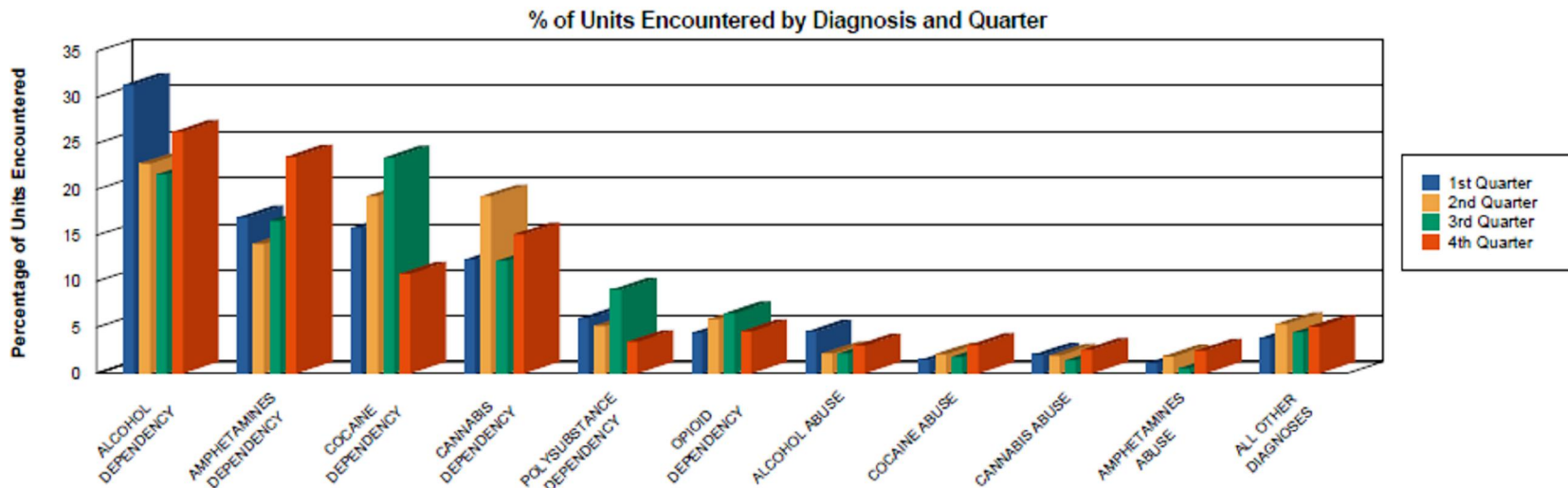
Attachment A

Medicaid

Medicaid - Adult - HLOC - Statewide

July 1, 2009 to June 30, 2010

Diagnosis	1st Quarter	2nd Quarter	3rd Quarter	4th Quarter	Fiscal YTD
ALCOHOL DEPENDENCY	31.38%	22.82%	21.62%	26.26%	25.66%
AMPHETAMINES DEPENDENCY	16.95%	14.14%	16.59%	23.58%	17.81%
COCAINE DEPENDENCY	15.84%	19.29%	23.47%	10.84%	17.29%
CANNABIS DEPENDENCY	12.40%	19.25%	12.25%	15.09%	14.71%
POLYSUBSTANCE DEPENDENCY	5.98%	5.17%	9.10%	3.44%	5.90%
OPIOID DEPENDENCY	4.44%	5.90%	6.54%	4.57%	5.34%
ALCOHOL ABUSE	4.54%	2.17%	2.16%	3.03%	3.01%
COCAINE ABUSE	1.46%	2.10%	1.81%	3.07%	2.10%
CANNABIS ABUSE	2.03%	1.95%	1.43%	2.56%	2.00%
AMPHETAMINES ABUSE	1.13%	1.85%	0.56%	2.49%	1.50%
ALL OTHER DIAGNOSES	3.85%	5.38%	4.46%	5.08%	4.68%



Adult:

Addiction and Prevention Services State Quality Committee

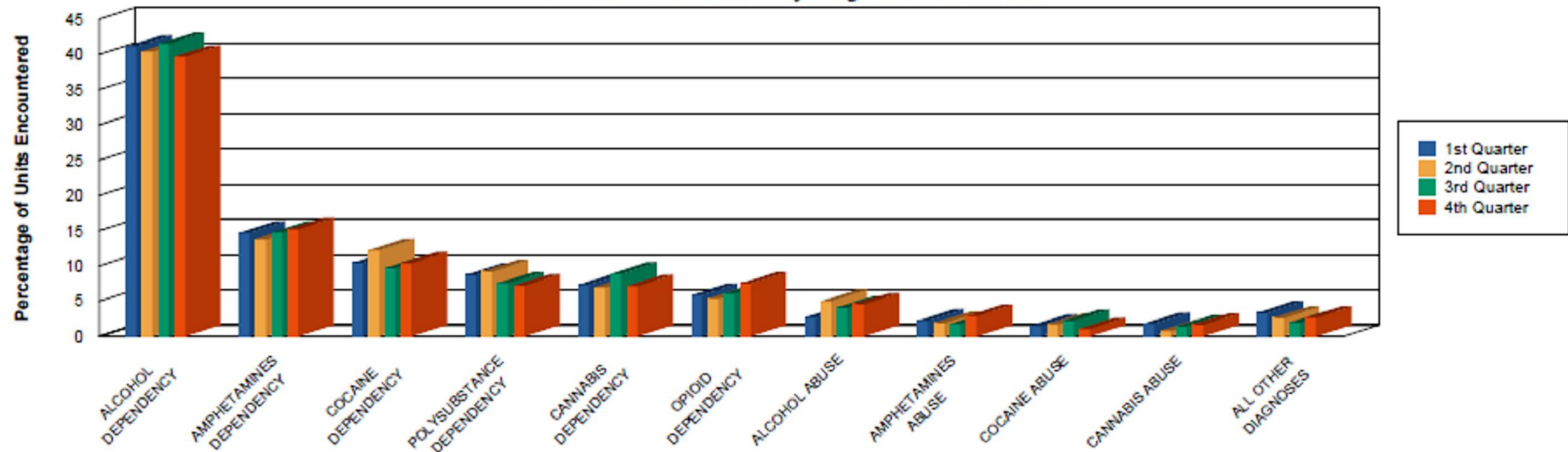
AAPS Adult:

AAPS - Adult - HLOC - Statewide

July 1, 2009 to June 30, 2010

Diagnosis	1st Quarter	2nd Quarter	3rd Quarter	4th Quarter	Fiscal YTD
ALCOHOL DEPENDENCY	41.11%	40.41%	41.50%	39.68%	40.68%
AMPHETAMINES DEPENDENCY	14.72%	13.80%	14.75%	15.18%	14.61%
COCAINE DEPENDENCY	10.44%	12.25%	9.69%	10.38%	10.69%
POLYSUBSTANCE DEPENDENCY	8.74%	9.22%	7.54%	7.21%	8.16%
CANNABIS DEPENDENCY	7.33%	6.97%	8.89%	7.14%	7.60%
OPIOID DEPENDENCY	5.90%	5.37%	6.13%	7.52%	6.23%
ALCOHOL ABUSE	2.73%	5.00%	4.10%	4.57%	4.12%
AMPHETAMINES ABUSE	2.26%	1.89%	1.77%	2.91%	2.20%
COCAINE ABUSE	1.55%	1.68%	2.23%	1.07%	1.64%
CANNABIS ABUSE	1.83%	0.77%	1.42%	1.67%	1.41%
ALL OTHER DIAGNOSES	3.39%	2.64%	1.98%	2.67%	2.66%

% of Units Encountered by Diagnosis and Quarter



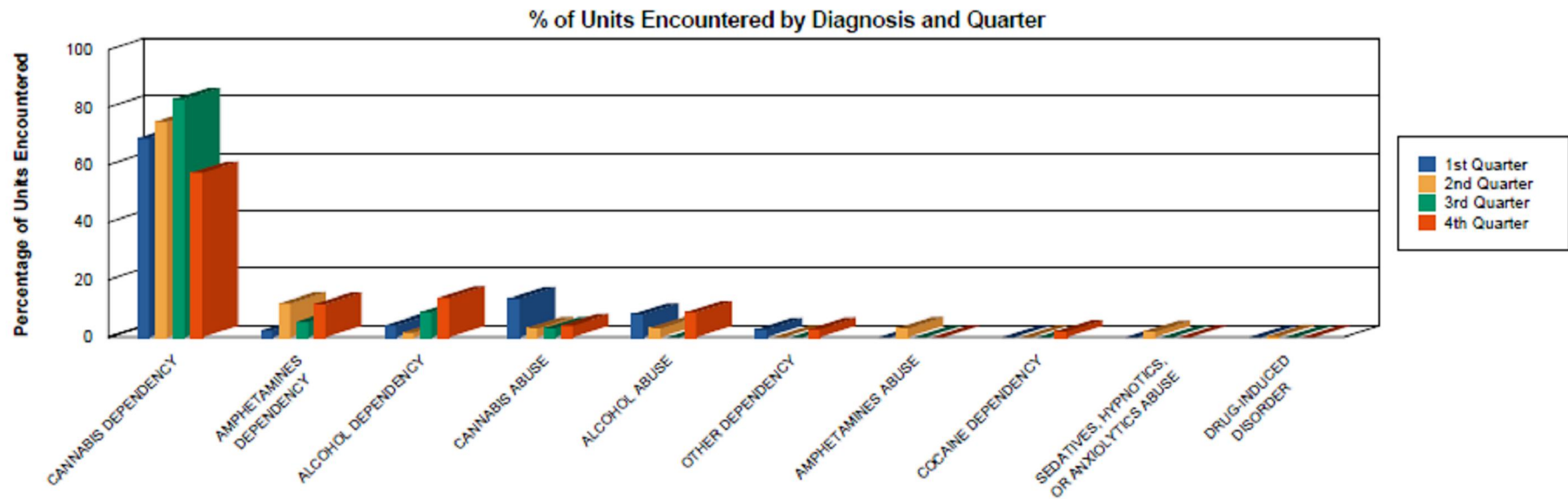
**Addiction and Prevention Services
State Quality Committee**

Medicaid Adolescent:

Medicaid - Adolescent - HLOC - Statewide

July 1, 2009 to June 30, 2010

Diagnosis	1st Quarter	2nd Quarter	3rd Quarter	4th Quarter	Fiscal YTD
CANNABIS DEPENDENCY	69.23%	75.00%	82.74%	57.17%	70.71%
AMPHETAMINES DEPENDENCY	2.49%	11.78%	5.42%	11.53%	7.98%
ALCOHOL DEPENDENCY	4.14%	1.56%	8.74%	13.74%	7.27%
CANNABIS ABUSE	13.49%	3.11%	3.10%	4.11%	5.79%
ALCOHOL ABUSE	7.93%	3.22%	0.00%	8.63%	4.99%
OTHER DEPENDENCY	2.72%	0.00%	0.00%	2.81%	1.40%
AMPHETAMINES ABUSE	0.00%	3.11%	0.00%	0.00%	0.77%
COCAINE DEPENDENCY	0.00%	0.00%	0.00%	2.01%	0.55%
SEDATIVES, HYPNOTICS, OR ANXIOLYTICS ABUSE	0.00%	1.89%	0.00%	0.00%	0.47%
DRUG-INDUCED DISORDER	0.00%	0.33%	0.00%	0.00%	0.08%



**Addiction and Prevention Services
State Quality Committee**

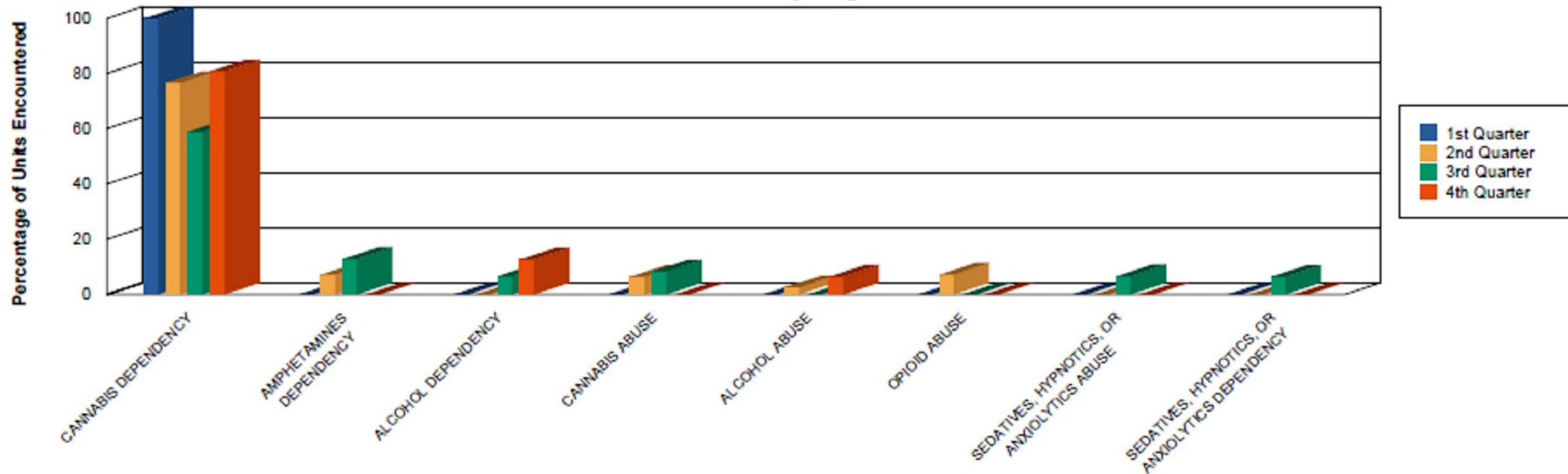
AAPS Adolescent:

AAPS - Adolescent - HLOC - Statewide

July 1, 2009 to June 30, 2010

Diagnosis	1st Quarter	2nd Quarter	3rd Quarter	4th Quarter	Fiscal YTD
CANNABIS DEPENDENCY	100.00%	76.61%	58.95%	80.83%	74.53%
AMPHETAMINES DEPENDENCY	0.00%	7.20%	12.89%	0.00%	6.20%
ALCOHOL DEPENDENCY	0.00%	0.00%	6.68%	12.69%	5.82%
CANNABIS ABUSE	0.00%	6.43%	8.35%	0.00%	4.54%
ALCOHOL ABUSE	0.00%	2.57%	0.00%	6.48%	2.65%
OPIOID ABUSE	0.00%	7.20%	0.00%	0.00%	2.12%
SEDATIVES, HYPNOTICS, OR ANXIOLYTICS ABUSE	0.00%	0.00%	6.68%	0.00%	2.12%
SEDATIVES, HYPNOTICS, OR ANXIOLYTICS DEPENDENCY	0.00%	0.00%	6.44%	0.00%	2.04%

% of Units Encountered by Diagnosis and Quarter



Addiction and Prevention Services State Quality Committee

All Funding Sources, All Ages, Statewide:

All Fund Sources - All Ages - HLOC - Statewide

July 1, 2009 to June 30, 2010

Diagnosis	1st Quarter	2nd Quarter	3rd Quarter	4th Quarter	Fiscal YTD
ALCOHOL DEPENDENCY	37.63%	35.22%	36.25%	35.76%	36.20%
AMPHETAMINES DEPENDENCY	14.77%	13.71%	14.78%	16.51%	14.94%
CANNABIS DEPENDENCY	10.78%	12.43%	12.52%	11.44%	11.81%
COCAINE DEPENDENCY	11.27%	13.07%	11.85%	10.04%	11.57%
POLYSUBSTANCE DEPENDENCY	7.82%	8.02%	7.49%	6.12%	7.36%
OPIOID DEPENDENCY	5.36%	5.24%	5.93%	6.57%	5.78%
ALCOHOL ABUSE	3.28%	4.36%	3.55%	4.43%	3.91%
AMPHETAMINES ABUSE	1.93%	1.90%	1.46%	2.69%	1.99%
CANNABIS ABUSE	2.22%	1.15%	1.57%	1.91%	1.71%
COCAINE ABUSE	1.48%	1.68%	2.05%	1.41%	1.66%
ALL OTHER DIAGNOSES	3.46%	3.22%	2.55%	3.12%	3.08%

